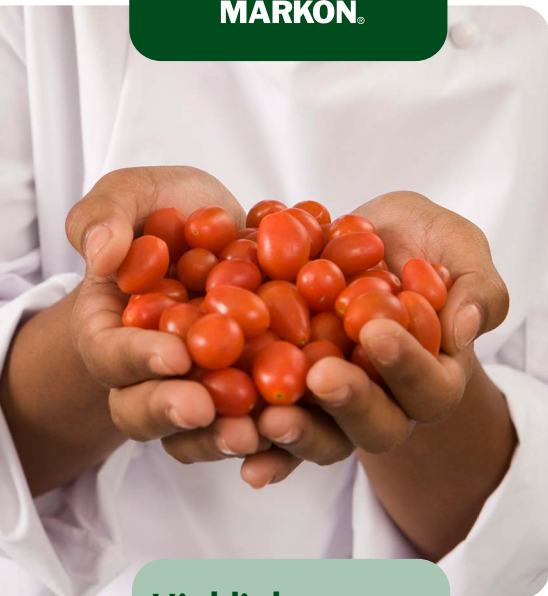


**CONFIDENCE**  
IN EVERY CASE.



## Highlights

- Markon First Crop® (MFC) Premium Romaine Lettuce weights are much higher on average than the rest of the industry (36 to 38 pounds compared with 31 to 37 pounds).
- Foggy mornings, overcast days, high humidity, and warm afternoons are causing quality challenges, including increased insect pressure (aphids), mildew, and long core/seeder.
- The avocado market is high. Mexican Flora Loca volume is low due to rain, especially 48-count and larger sizes. California supplies will be on the market through August. The Peruvian season will run through September.

# Fresh Crop Report

WEEK OF AUGUST 22, 2021

## Ask a Markon Chef

Markon has gathered a group of our member- and grower-affiliated chefs to answer your questions about produce.

**Ask us your most challenging cooking inquiries online >**

### FEATURED QUESTION

**Q:** Pairing fresh cantaloupe and honeydew with meats is a classic way to start a meal. What combinations do you suggest?

**A:** Salty/cured hams pair perfectly with these melons. I like to wrap chunks of wedges with thinly sliced prosciutto, Spanish Serrano, or shaved Virginia ham. Spice it up with a jalapeno chile round on top!

- Use shaved melons to line burgers, sandwiches, and wraps in place of tomatoes for a sweet, summery change.
- Crumble crisp bacon over cantaloupe, honeydew, and watermelon slices for a refreshing starter.

*Chef Vic "Vegas" Moea,  
Markon member chef*



## Menu Feature

Every chef needs a few solid recipes in his or her repertoire. That's why Markon has put together a catalog of fresh produce-based recipes that cover it all: day- and menu-parts, the range of seasons, a variety of cuisines, and a diverse list of ingredients.



### Modern Macaroni Salad with Upland Cress

This childhood picnic classic gets an update here with peppery upland cress and more healthy vegetables.

**Get the full recipe >**

## Tips for Serving Tomatoes

- Arrange fat slices of MFC Tomatoes, MFC Cucumbers, house-made croutons, and fresh MFC Basil; drizzle with Caesar dressing and shaved Parmesan cheese.
- Layer different colored MFC Tomatoes with Mozzarella slices, grilled MFC Portabella Mushrooms, polenta, and pesto.
- Serve seared sea bass with a fruity, herbaceous, garlicky fresh (not long-simmered) tomato sauce.
- Toss cooked bulgur wheat, MFC Eggplant, MFC Baby Dill, and MFC Grape Tomatoes; serve aside sandwiches and burgers.
- Puree MFC Tomatoes, MFC Cucumbers, MFC Red Bell Peppers, MFC Red Onions, Ready-Set-Serve® (RSS) Peeled Garlic, vinegar, and oil for a refreshing gazpacho.



**Browse additional usage tips >**

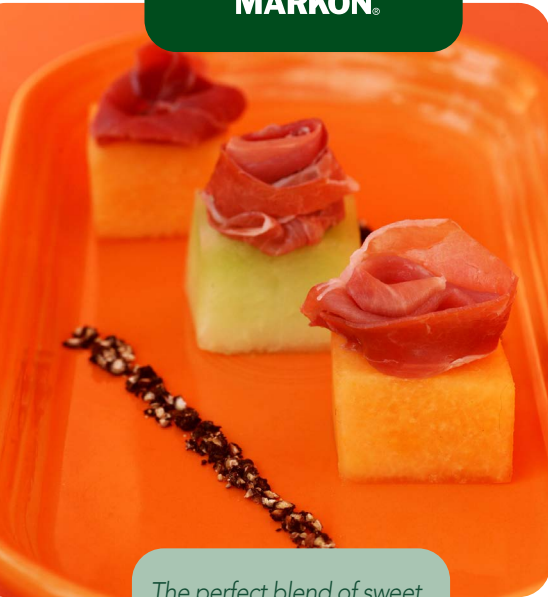


To learn more about Markon brands, please contact your sales representative | [markon.com](http://markon.com)



# Fresh Crop Report

WEEK OF AUGUST 22, 2021



The perfect blend of sweet and salty, these melon-prosciutto appetizers are ideal for a pre-dinner appetizer or fresh bar snack.

## Produce Highlights

### Limes

- Prices are rising.
- Poor weather is causing quality problems like styler, oil spotting, and scarring.

### Onions

- Harvesting continues to ramp up in the Northwest.
- Summer onions in California and New Mexico are nearing the end of the season.

### Potatoes

- MFC Idaho Burbank Potatoes are finished for the season.
- Field-run MFC Norkotah Potatoes are now shipping.

## Apples



Region	Supplies	Quality	Price
WA	^^^	*****	\$\$\$

The market is unchanged; storage stocks are adequate, but tightening as the end of the season is near. Washington MFC Fuji, Gala, Golden Delicious, Granny Smith, Honeycrisp, and Red Delicious Apples are available. Sugar levels range from 12 to 14 Brix.

## Asparagus



Region	Supplies	Quality	Price
MEX	^^^	*****	\$\$\$
PERU/FL	^^^	*****	\$\$\$

Prices are weak. Supplies are plentiful in Mexico and Peru. Quality is very good: tips are firm, color is bright, and flavor is pleasantly grassy. MFC Asparagus is available.

## Avocados



Region	Supplies	Quality	Price
CA	^^^	*****	\$\$\$
MEX	^^^	*****	\$\$\$
PERU	^^^	*****	\$\$\$

The market is high. Mexican Flora Loca volume is low due to rain, with extremely tight No. 2 stocks. California supplies will be on the market through August. The Peruvian season will run through September. RSS Avocado Chunks, Halves, Pico de Gallo Guacamole, and Pure Pulp are available.

## Bells: Green



Region	Supplies	Quality	Price
CA	^^^	*****	\$\$\$
EAST COAST	^^^	*****	\$\$\$
MEX/TX	^^^	*****	\$\$\$

Prices are low. Stocks are dominated by jumbo and extra-large sizes. California production is taking place in Hollister. East Coast volume is rising. Quality is very good: skins are smooth, color is uniform, and flavor is zesty. MFC and Markon Essentials® (ESS) Green Bell Peppers are available.

## Bells: Red and Yellow



Region	Supplies	Quality	Price
CA	^^^	*****	\$\$\$
CAN	^^^	*****	\$\$\$
EAST COAST	^^^	*****	\$\$\$
MEX	^^^	*****	\$\$\$

The market ranges from weak to average. Canadian greenhouse volume is up. Quality is very good: color is vibrant and shape is elongated. MFC and ESS Red Bell Peppers are available.

## Blackberries



Region	Supplies	Quality	Price
CA	^^^	*****	\$\$\$

Prices are level; California stocks are adequate. Quality is very good: berries are plump and juicy with tangy-sweet flavor.

## Blueberries



Region	Supplies	Quality	Price
CA	^^^	*****	\$\$\$
GA	^^^	*****	\$\$\$
MEX	^^^	*****	\$\$\$
PNW	^^^	*****	\$\$\$

The market is starting to inch down. July's heatwave damaged much of the Pacific Northwest crop, but new crop supplies are increasing. Price will fall through August as new crop Mexican production begins. Quality ranges from good to very good.

## Broccoli



Region	Supplies	Quality	Price
CA	^^^	*****	\$\$\$
MEX/TX	^^^	*****	\$\$\$

Prices are weak; supplies are ample. Mexican-grown stocks are available in South Texas. Crown quality is very good: brown bead, hollow core, and yellowing are occasional problems. MFC Broccoli is available.



# Fresh Crop Report

WEEK OF AUGUST 22, 2021

## Cantaloupe



Region	Supplies	Quality	Price
AZ	^^^	*****	\$\$\$
CA	^^^	*****	\$\$\$

The market is stable. Large sizes dominate the supplies. Quality is very good: sugar levels range from 11 to 13 Brix. Domestic MFC Cantaloupes are available.

## Cauliflower



Region	Supplies	Quality	Price
CA	^^^	*****	\$\$\$

Prices are weak; stocks are abundant. Quality is very good: browning is a minor issue. ESS Cauliflower is available.

## Celery



Region	Supplies	Quality	Price
CA	^^^	*****	\$\$\$
MI	^^^	*****	\$\$\$

The market is near the bottom. Volume is high in California's Salinas Valley and Michigan. Seeder is a slight problem in some fields. MFC Celery is available.

## Cucumbers



Region	Supplies	Quality	Price
EAST COAST	^^^	*****	\$\$\$
MEX	^^^	*****	\$\$\$

The market is steady. East Coast supplies have increased to average. Baja Mexico is the primary growing area on the West Coast. MFC and ESS Cucumbers are available.

## Grapes



Region	Supplies	Quality	Price
CA	^^^	*****	\$\$\$

Prices are low; domestic supplies are ample. Quality is very good: fruit is firm, yet juicy with subtly sweet flavor. Domestic MFC and ESS Green and Red Seedless Grapes are available.

## Green Leaf/Variety Lettuce



Region	Supplies	Quality	Price
CA	^^^	*****	\$\$\$

Prices are weak. Quality is very good: internal and fringe burn are minor problems. MFC Premium Green Leaf Lettuce is available.

## Honeydew



Region	Supplies	Quality	Price
AZ	^^^	*****	\$\$\$
CA	^^^	*****	\$\$\$

The market is level; California volume is sufficient even though there were fewer plantings this season. Sugar levels range from 10 to 12 Brix. Domestic MFC Honeydew Melons are on the market.

## Iceberg Lettuce



Region	Supplies	Quality	Price
CA	^^^	*****	\$\$\$

Prices are low; volume is high. Quality is very good: head weights are higher. Seeder is affecting some lots. MFC Premium Iceberg Lettuce is available.

## Lemons



Region	Supplies	Quality	Price
ARG	^^^	*****	\$\$\$
CA	^^^	*****	\$\$\$
CHILE	^^^	*****	\$\$\$
MEX	^^^	*****	\$\$\$

High markets will persist through early fall; domestic supplies are limited. Imported fruit is shipping from Argentina (East Coast), Chile (East and West) and Mexico (Texas). MFC and ESS Lemons are available.

## Limes



Region	Supplies	Quality	Price
MEX/TX	^^^	*****	\$\$\$

Prices are elevated. Poor weather is causing quality problems like styler, oil spotting, and scarring. MFC and ESS Limes are available.

## Onions



Region	Supplies	Quality	Price
CA	^^^	*****	\$\$\$
ID	^^^	*****	\$\$\$
NM	^^^	*****	\$\$\$
OR	^^^	*****	\$\$\$
WA	^^^	*****	\$\$\$

The new crop, fresh-run, MFC Red and Yellow Onion harvest continues to ramp up in the Northwest, shipping out of Idaho, Oregon and Washington. The Colorado season begins later this week. Utah-grown onions will hit the market next week.

## Oranges



Region	Supplies	Quality	Price
CA	^^^	*****	\$\$\$
IMPORTS	^^^	*****	\$\$\$

California Valencia prices are steady; 56- and 72-count sizes dominate the crop. Quality is very good: regreening, puffiness, and creasing are slight issues. Sugar levels range from 12 to 13 Brix. Imported Navel oranges are available from Chile (on both coasts) and South Africa into the West Coast. MFC and ESS Valencia Oranges are available.

## Pears



Region	Supplies	Quality	Price
CA	^^^	*****	\$\$\$
WA	^^^	*****	\$\$\$

Prices are level; supplies are sufficient. The new crop California Bartlett season is underway. Washington Bartlett production is just getting started; D'Anjous will be harvested in early September.

## Pineapple



Region	Supplies	Quality	Price
CR	^^^	*****	\$\$\$
ECUADOR	^^^	*****	\$\$\$

Prices are up; stocks are tight due to seasonal supply gap and Costa Rican rain. Volume is starting to rebound. Quality is very good: sugar levels are approximately 15 Brix.





# Fresh Crop Report

WEEK OF AUGUST 22, 2021

## Potatoes



Region	Supplies	Quality	Price
CO	^^^	*****	\$\$\$
ID	^^^	*****	\$\$\$
OR	^^^	*****	\$\$\$
TX	^^^	*****	\$\$\$
WA	^^^	*****	\$\$\$

MFC Idaho Burbank Potatoes are finished for the season. Field-run MFC Norkotah Potatoes are now shipping. There is a split market; new crop Norkotah cartons are higher priced than storage crop Burbank supplies. Minor skinning and excess moisture might be observed in fresh-run potatoes. U.S. No. 2 markets are high as new crop potatoes exhibit very few defects during the early stages of harvesting. Remaining Burbank quality is fair to average as pressure bruising and hollow heart problems persist.

## Raspberries



Region	Supplies	Quality	Price
CA	^^^	*****	\$\$\$
MEX/CA	^^^	*****	\$\$\$

A seasonal harvesting gap has driven up markets; supplies will be tight for at least another week. Quality is very good: berries are plump and sweet.

## Romaine



Region	Supplies	Quality	Price
CA	^^^	*****	\$\$\$

Prices are stable. Quality is good: fringe and internal burn are problems, but overall stocks are abundant, so growers can cull damaged heads. MFC Premium Romaine Lettuce is available.

## Salads & Blends



Region	Supplies	Quality	Price
CA	^^^	*****	\$\$\$

The market is level; volume is high. Raw product quality is very good. Maintaining the cold chain is critical, especially during the hot summer months.

## Spring Mix



Region	Supplies	Quality	Price
CA	^^^	*****	\$\$\$

Prices are unchanged. Overall quality is very good, yet brittle texture, mildew, and shorter shelf-life are minor problems at this time of year. RSS Conventional and Organic Spring Mixes are available.

## Squash



Region	Supplies	Quality	Price
CA	^^^	*****	\$\$\$
EAST COAST	^^^	*****	\$\$\$
MEX	^^^	*****	\$\$\$

The zucchini market is steady to slightly lower, while yellow squash prices are higher than average. Rain delayed last week's East Coast harvests, but supplies are increasing. High temperatures are affecting volume in California and Mexico. Prices will ease through August. Quality is very good: skins are smooth and flavor is pleasantly bitter. MFC Squash is available.

## Strawberries



Region	Supplies	Quality	Price
CA	^^^	*****	\$\$\$

Prices are a bit higher than last week. Supplies are diminishing as the Salinas/Watsonville season winds down. Supplies will increase once the fall Santa Maria crop ramps up in late August/early September. Quality is very good. MFC Strawberries are available in Markon's recyclable cardboard or plastic clamshells.

## Tomatoes



Region	Supplies	Quality	Price
CA	^^^	*****	\$\$\$
EAST COAST	^^^	*****	\$\$\$
MEX	^^^	*****	\$\$\$

Round and grape tomato markets are steady. Roma prices are low. East Coast stocks are limited, but starting to increase. In Mexico, the Baja season is ending; size is small. MFC Tomatoes are available.

## Tree Fruit



Region	Supplies	Quality	Price
CA	^^^	*****	\$\$\$
GA	^^^	*****	\$\$\$

The market is a bit higher than last week. California apricots will ship through this month. Nectarines and peaches will remain on the market through mid-September. Sugar levels range from 10 to 12 Brix. Plums will be shipped through mid-October. Sugar levels range from 12 and 14 Brix. Georgia peaches are available on the East Coast.

## Watermelon



Region	Supplies	Quality	Price
CA	^^^	*****	\$\$\$
EAST COAST	^^^	*****	\$\$\$
TX	^^^	*****	\$\$\$

Prices are weak; supplies are abundant. New crop California desert harvesting is underway. Large sizes dominate the crop. Quality is very good: fruit is sweet and juicy.



**READY-SET-SERVE**  
by MARKON

Ready-Set-Serve (RSS).  
Table-ready fruits & vegetables.  
Backed by 5-Star.



Markon First Crop (MFC).  
Whole fresh fruits &  
vegetables. Backed by 5-Star.

**MARKON**  
**ESSENTIALS**

Markon Essentials (ESS).  
No. 2 grade value-focused  
brand. Quality, food safety,  
and consistency in every  
box. Backed by 5-Star.



5-Star Food Safety.  
Addressing quality and  
safety at five key points.